

XG-7002 PICKUP TEST I

--Wide range frequency characteristics measurement  
/Crosstalk characteristics measurement--

This record has been made for the measurements of pickup characteristics, including tonearm, over an extremely wide frequency band. Both sides A and B are the same in contents.

\* Bands 1 to 4 contain sweep frequencies from 1 kHz to 50 kHz at a constant velocity amplitude of 4 cm/s ( peak value, 45 direction) As shown in Fig. 1, there is a 10 seconds 1 kHz pilot signal, followed by approximately 7 seconds nonmodulation and then the sweep frequency.

The sweep speed is 5 seconds per octave, correspond to the 3 mm/s. paper speed of the B&K Type 2305 or 2307 High Speed Level Recorders.

The sweep frequency is recorded left and right twice.

\* Band 5 contains sweep frequencies from 3 Hz to 1 kHz with a recording characteristic of 250 Hz turnover. The recording level is 4 cm/s (peak value, 45 direction) at 1 kHz.

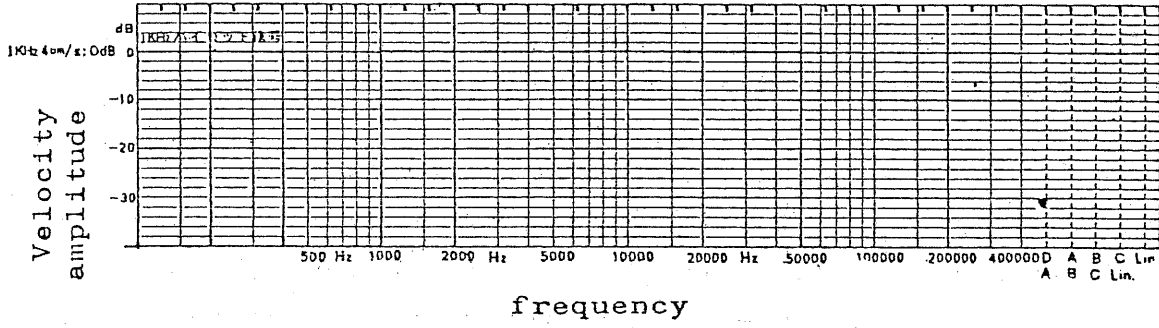
As shown in Fig. 2, there is a 24 seconds 1 kHz pilot signal, followed by the sweep frequency. The sweep speed is 15 seconds per octave, correspond to the 1 mm/s paper speed of the level recorder.

The sweep frequency is recorded left and right once, the recorded frequency and position of each band are shown in Fig. 3.

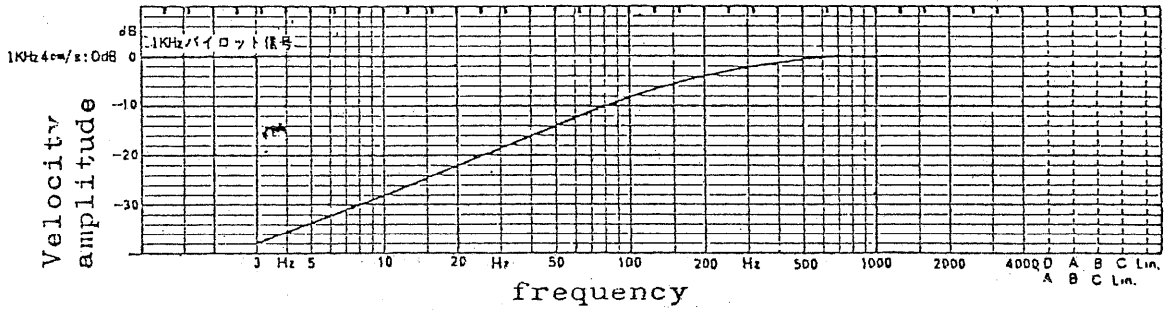
Fig. 4 shows an example of a 250 Hz turnover playback equalizer circuit.

Table 1 shows the theoretical values for the 250 Hz turnover equalizer characteristics. (0 dB at flat region).

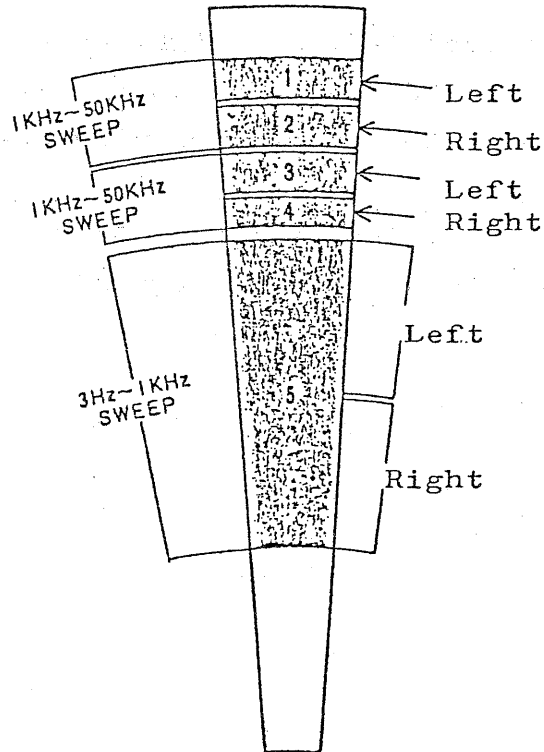
(Fig-1) Recording characteristics of sweep frequency(1KHz-50KHz)



(Fig-2) Recording characteristics of sweep frequency(3Hz-1KHz)

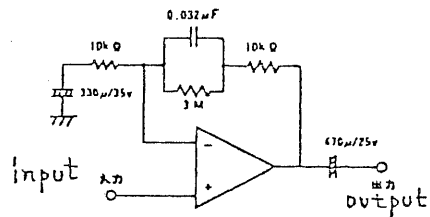


(Fig-3) Both Side A and Side B

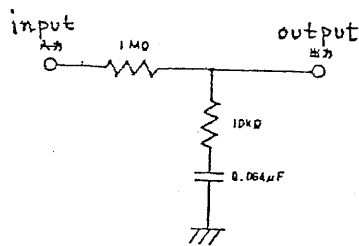


(Fig-4) Playback equalizer circuit(250Hz turnover)

(a) Example of circuit



(b) Example of circuit



(Table-1) Playback characteristics of 250Hz turnover equalizer

Frequency (Hz)	Level (dB)	Frequency (Hz)	Level (dB)	Frequency (Hz)	Level (dB)
3	+38.42	60	+12.64	2 K	+0.07
4	+35.92	80	+10.32	3 K	+0.03
5	+33.98	100	+8.60	4 K	+0.02
6	+32.40	150	+5.77	5 K	+0.01
7	+29.90	200	+4.09	6 K	+0.01
8	+27.97	300	+2.29	7 K	+0.01
15	+24.45	400	+1.43	8 K	0
20	+21.97	500	+0.97	9 K	0
30	+18.48	600	+0.70	10 K	0
40	+16.03	800	+0.40	15 K	0
50	+14.15	1 K	+0.26	20 K	0